

512 Walk behind sweeper



Technical Data		512 ET	512 P	Carpet
Sweeping widths:				
with 1 side brush	mm.	700	700	700
with main brush only	mm.	500	500	500
Waste hopper volume	l.	50	50	50
Filter surface	sqm	2	2	2
Maximum speed	km/h	3,5	3,5	3,5
Power supply		12 V	24V	12 V
		118 Ah 5h	Honda 4Hp	118 Ah 5h
Empty weight	kg	82	111	82
Lenght	mm.	1225	1225	1225
Width	mm.	753	753	753
Height	mm.	903	903	903



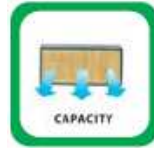
512 Great Productivity



Huge hopper capacity



Front hopper contains large debris and rear hopper contains dust for a total of 50 litres.



Extensive filter surface



2 square meters filtering surface with correct dust and air passage space between each element.



Large sweeping path



50 cm main brush plus one side brush for a sweeping width of 70 cm



Extensive running time



Separate electric motors allow maximum run time. Over 2,5 hour run time with standard 12 V - 118 Ah 5h batteries

512 High performance (1)



Main brush pressure adjustment



Brush pressure adjustment knob

The system allows:

- to adapt immediately pressure to all types of surfaces
- save money on brush consumption
- save power to lengthen run time



Main brush special “V” shape design



Assures debris collection to the centre of the hopper and avoids leaving dirt lines on the side of the machine

512 High performance (2)



Dust flap for large debris collection



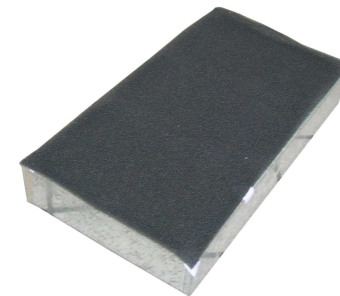
Easily operated by pressing lever on left hand side



Dust micro filtration



Filter panel also available in washable polyester material



Pre-filter utilised to capture carpet fibre when used for carpet cleaning

512 High performance (3)

512 Carpet

The standard battery powered unit can be easily converted into a highly professional large surface carpet cleaning machine.



With a large diameter brush having 20,000 bristles per brush formed in a special "V" shape, efficient removal and collection of dust and debris is achieved. Rotating at high rpm, the brush beats the dust out of the carpet ensuring excellent cleaning and maintenance of all carpeted surfaces.

With bristles of differing thickness, a variety of dust and debris is collected in the waste bin. For sand and earth, harder thicker bristles ensure that this type of soiling is collected, whilst soft thinner bristles achieve effective removal and collection of light dust and soiling.

The carpet cleaning kit consists in:

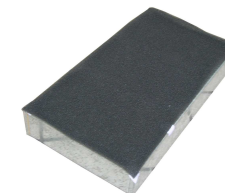
Electric filter shaker



On board battery charger



Pre-filter protection against carpe fibres



512 High performance (4)

Petrol Version

The engine is connected to a high power 40 Amp alternator that provides all services of the machine with the necessary current required.



Engine installed easily instead of batteries. Quick connections easily connect generator to standard unit.

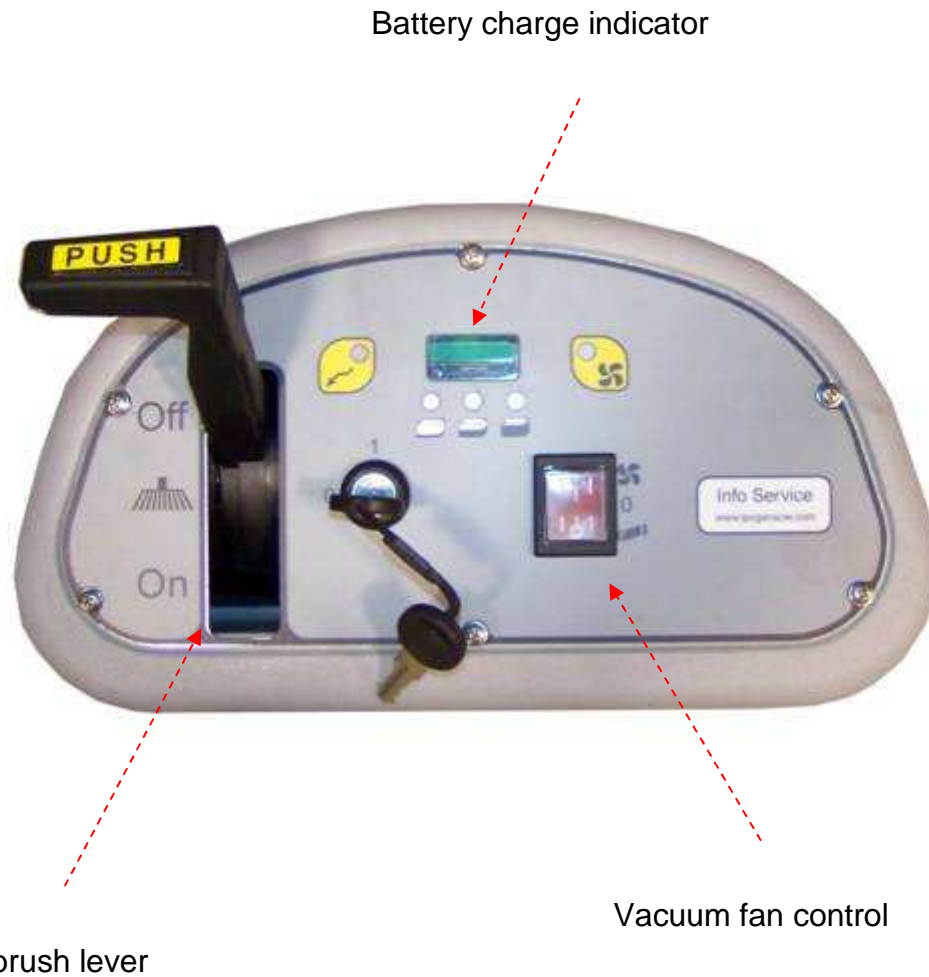


Engine started by hand strap and manual choke easily reached from side opening on machine cover.

512 Ergonomics, user friendly (1)



Easy to use control panel



512 Ergonomics, user friendly (2)



Easy to use control panel



Side brush lever



Easy hopper discharge



Light weight hopper material to allow easy discharge



Designed to assure minimum noise levels



Low noise electric vacuum unit

512 Ergonomics, user friendly (3)



Great visibility whilst working



Side brush easily seen whilst working.



Great manoeuvrability thanks to its most compact design



1225 mm. lenght



Compartments for objects and drinks

512 Ergonomics, user friendly (3)



On board charger can be fitted as optional

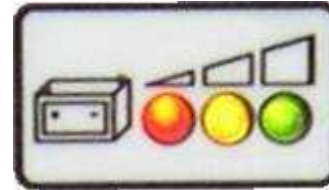


Easily installed under seat compartment

Equipped with easy to see external display that indicates state of charging



Battery level indicator



The battery is protected as follows:

Green = Sufficient charge

Yellow = (22,5V) Display indicates battery to be charged.

Red = (20,5V acid / 21,5V Gel) All functions stop except traction

Red flashing = (18V) Machine stops also traction in order to protect battery



Cable compartment accessible from machine side opening

512 Low maintenance costs (1)



Dust filter replacement without tools



Quick disconnecting levers

Easy main and side brush replacement



One screw to remove side brush



Machine easily tilted on one side for brush removal and compartment checking

512 Low maintenance costs (2)



Easy access to all internal components



On board charger (opt)



Electric filter shaker motor



Side brush unit

512 Robust construction (1)



Maximum protection against impact



Thick material body moulding



Side brush fully protected against impact



Heavy duty chassis in fully coated steel



Fully coated steel frame structure

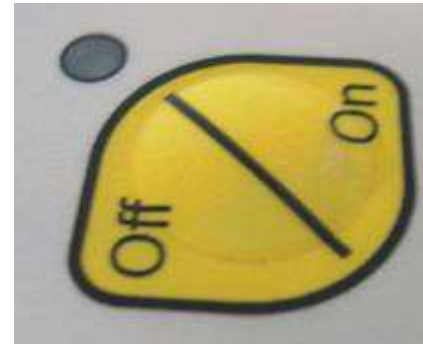
512 Robust construction (2)



Filter shaker motor fully protected against dust



Panel control switches protected against water and humidity



Large wheels



512 Available accessories

All accessories are supplied as spares separately from standard unit



On board charger



Side brush non marking
roller bumper