

512 Rider sweeper



TECHNICAL DATA		Battery	Carpet	Petrol
Sweeping widths:				
with 1 side brush	mm.	700	700	700
with main brush only	mm.	500	500	500
Waste hopper volume	l.	50	50	50
Filter surface	sqm	2	2	2
Maximum climbing grade	%	2	2	2
Maximum speed	km/h	5	5	5
Power supply		24 V	24 V	Petrol-24V
		118 Ah 5h	118 Ah 5h	3 kW
Empty weight	kg	123	128	156
Length	mm.	1180	1180	1180
Width	mm.	753	753	753
Height	mm.	1182	1182	1182



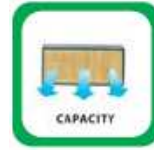
512 Rider Great productivity



Huge hopper capacity



Front hopper contains large debris and rear hopper contains dust for a total of 50 litres.



Extensive filter surface



2 square meter filtering surface with correct dust and air passage space between each element.



Large sweeping path



50 cm main brush plus one side brush for a sweeping width of 70 cm



Extensive running time

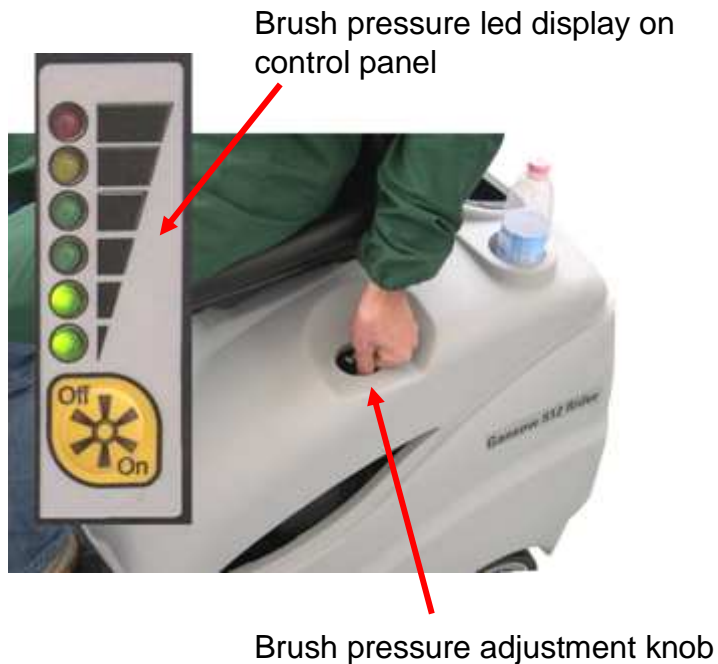


Separate electric motors allow maximum run time. Over 4 hour run time with standard 24 V - 118 Ah 5h batteries

512 Rider High performance (1)



Main brush pressure adjustment



Main brush special "V" shape design



Assures debris collection to the centre of the hopper and avoids leaving dirt lines on the side of the machine

The system allows:

- to adapt immediately pressure to all types of surfaces
- save money on brush consumption
- save power to lengthen run time

512 Rider High performance (2)



Dust flap for large debris collection



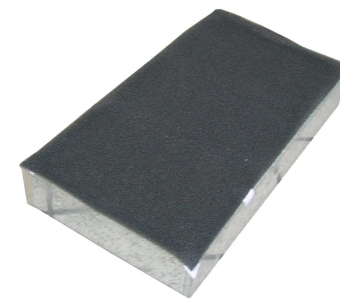
Easily operated by pressing lever on left hand side



Dust micro filtration



Filter panel also available in washable polyester material



Pre-filter utilised to capture carpet fibre when used for carpet cleaning (

512 Rider High performance (3)

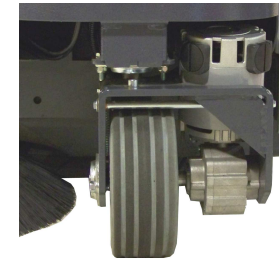
512 Rider Carpet version: Special equipment are as a standard



With a large diameter brush having 20,000 bristles per brush formed in a special “V” shape, efficient removal and collection of dust and debris is achieved. Rotating at high rpm, the brush beats the dust out of the carpet ensuring excellent cleaning and maintenance of all carpeted surfaces.

With bristles of differing thickness, a variety of dust and debris is collected in the waste bin. For sand and earth, harder thicker bristles ensure that this type of soiling is collected, whilst soft thinner bristles achieve effective removal and collection of light dust and soiling.

Higher Ah traction motor



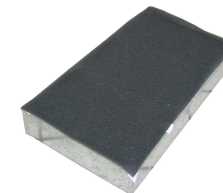
Larger non marking wheels



Non marking rubber flaps



Pre-filter protection against carpe fibres



512 Rider High performance (4)

512 Rider ST version: Special equipment are as a standard

The engine is connected to a high power 40 Amp alternator that provides all services of the machine with the necessary current required.

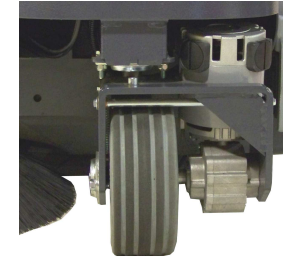


Engine kit installed easily instead of batteries. Quick connections easily connect generator to standard unit.



Engine started by hand strap and manual choke easily reached from side opening on machine cover.

Higher Ah traction motor



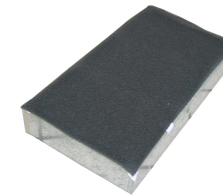
Larger non marking wheels



Non marking rubber flaps



Pre-filter protection against carpe fibres



512 Rider

Ergonomics, user friendly (1)



Easy to use control panel



512 Rider

Ergonomics, user friendly (2)



Easy to use control panel



Side brush lever



Dust flap lever



Easy hopper discharge



Light weight hopper material to allow easy discharge



Designed to assure minimum noise levels



Low noise electric vacuum unit

512 Rider

Ergonomics, user friendly (3)



Great visibility whilst working



Side brush easily seen whilst working.



Designed for maximum comfort



Fully adjustable seat



Great manoeuvrability thanks to its most compact design



1180 mm. length



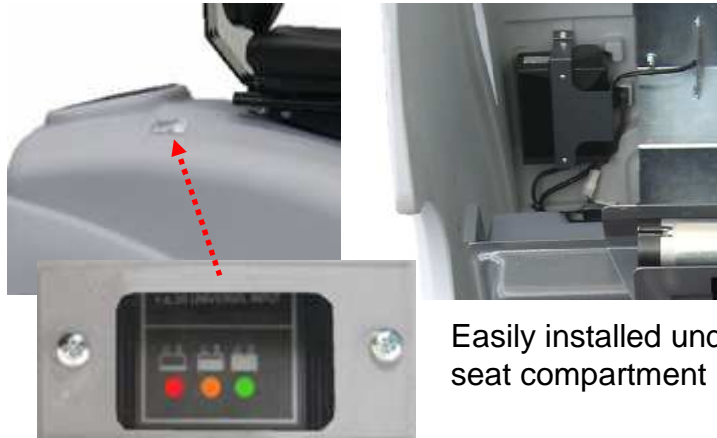
Compartments for objects and drinks

512 Rider

Ergonomics, user friendly (4)



On board charger can be fitted as optional



Easily installed under seat compartment

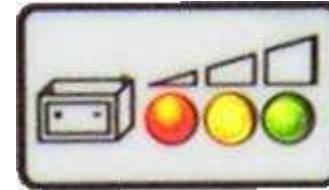
Equipped with easy to see external display that indicates state of charging



Cable compartment accessible from machine side opening



Battery level indicator



The battery is protected as follows:

Green = Sufficient charge

Yellow = (22,5V) Display indicates battery to be charged.

Red = (20,5V acid / 21,5V Gel) All functions stop except traction

Red flashing = (18V) Machine stops also traction in order to protect battery



Flashing beacon (optional)



Maximum visibility and safety

512 Rider

Low maintenance costs (1)



**Dust filter replacement
without tools**



Quick disconnecting levers

**Easy main and side brush
replacement**



One screw to remove side brush



Machine easily tilted on one side for brush
removal and compartment checking

512 Rider

Low maintenance costs (2)



Easy access to all internal components



On board charger (opt)



Electric filter shaker motor



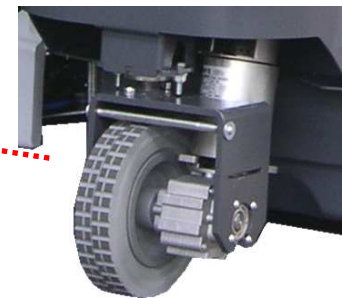
Main electrical board and fuses



Side brush unit



Control board



Front wheel traction

512 Rider

Robust construction (1)



Maximum protection against impact



Thick material body moulding



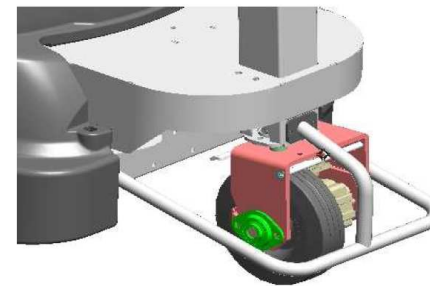
Side brush fully protected against impact



Heavy duty chassis in fully coated steel



Fully coated steel frame structure



Front steel bumper (optional)

512 Rider

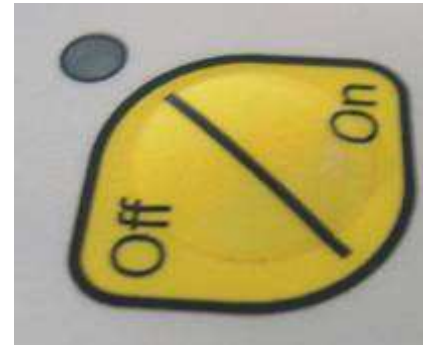
Robust construction (2)



Oil bath front traction reduction gear motor



Panel control switches protected against water and humidity



Filter shaker motor fully protected against dust



Large wheels



512 Rider Available accessories

All accessories are supplied as spares separately from standard unit



On board charger



Flashing beacon



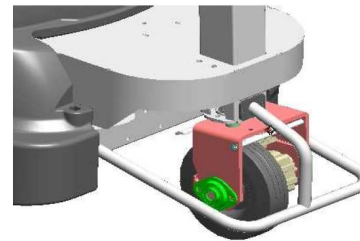
Side brush non marking roller bumper



Trolley System



Power Box



Front steel bumper (optional)